

FY 19 Midpoint Review

Promote. Preserve. Protect. www.hclhic.org @hclhic

POWERFUL TOOLS FOR CAREGIVERS:

FY19 Course Offerings & Locations	Enrollment Capacity	Enrollment per Location	Annual Enrollment Target	Completion Rate
9/11-10/16/18 Ellicott City 50+ Center	12	9	12	100%
10/11-11/15/18 Ellicott City 50+ Center	12	7	12	100%
Totals	24	16	24	100%
Capacity Percentage:	66.66%			

● FY 18 Capacity Percentage: 87.5%

Promote. Preserve. Protect. www.hclhic.org @hclhic

VIRTUAL DEMENTIA TOUR:

FY19 Course Offerings & Locations	Enrollment per Location	Annual Enrollment Target	Completion Rate
9/12/18 - Community Event at Ellicott City 50+ Center	15	14	100%
10/10/18 - Community Care Team at their office in Columbia	12	12	100%
10/19/18 - 50+ EXPO at Wilde Lake High School	44	34	100%
11/13/18 - Community Event at Ellicott City 50+ Center	10	14	100%
11/16/18 - Community Event at Elkridge 50+ Center	11	14	100%
Totals	92	88	100%

● FY 18 Total Enrollment: 127

Promote. Preserve. Protect. www.hclhic.org @hclhic

MEMORY CAFE:			
FY19 Course Offering	Enrollment per Location	Completion Rate	Average Enrollment 29.6
8/1/18	28	100%	
9/5/18	31	100%	
10/3/18	22	100%	
11/7/18	26	100%	
12/5/18	41	100%	
Totals	148	100%	

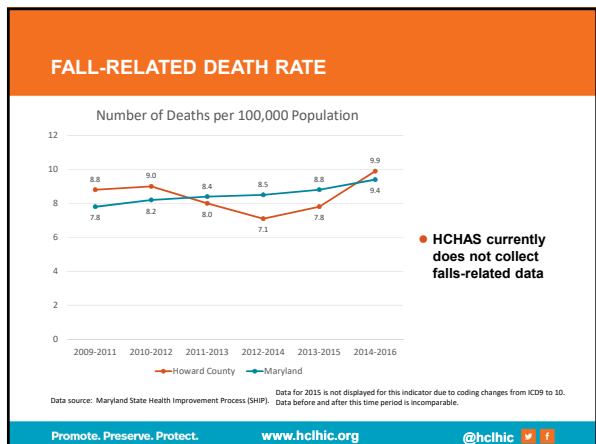
● FY 18 Total Enrollment: 300 ● FY 18 Average Enrollment: 25
 Promote. Preserve. Protect. www.hclhic.org @hclhic

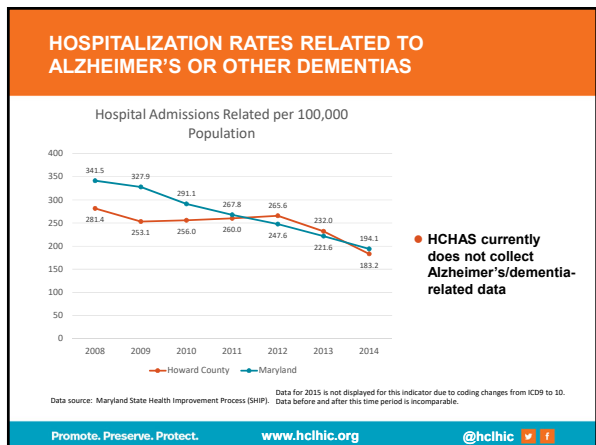
REMEMBERING WHEN:			
● FY 18:			
Presentations (# educated)	Home Safety Visits (# educated)	Smoke Alarms Installed	
1045	438	590	
● FY 19:			
Presentations (# educated)	Home Safety Visits (# educated)	Smoke Alarms Installed	
1404	255	204	

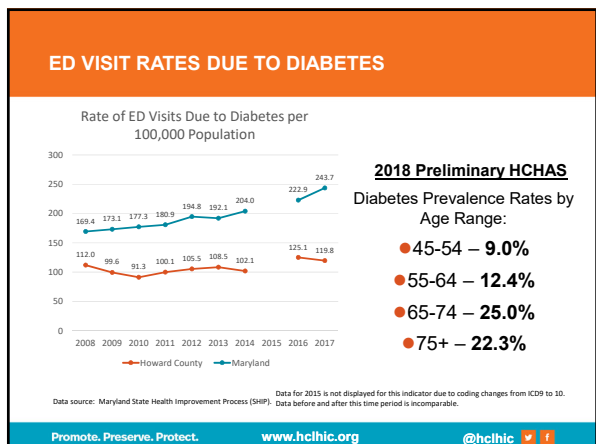
● Grant funding for the Remembering When program ended in February
 ● HCDFRS is still determining how program components will continue to be offered (if at all) moving forward
 Promote. Preserve. Protect. www.hclhic.org @hclhic

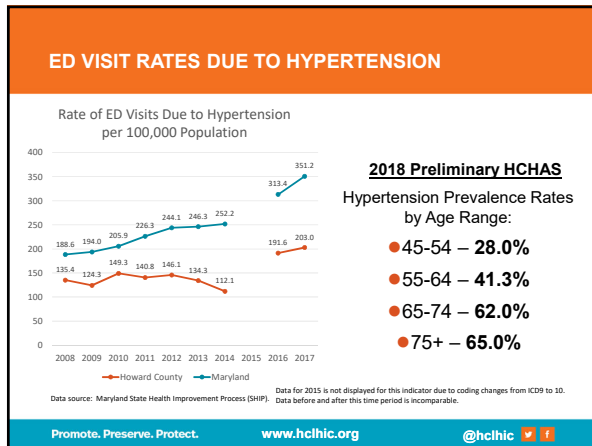
Updated SHIP Data and Preliminary 2018 HCHAS Findings

Promote. Preserve. Protect. www.hclhic.org @hclhic









Educational Initiatives Action Group Update

Promote. Preserve. Protect. www.hclhic.org @hclhic

GRIEF AND THE OLDER ADULT

GRIEF and the OLDER ADULT

A free seminar offered by the Health and Behavioral Division of the Howard County Office on Aging and Independence in partnership with the Local Health Improvement Coalition.

March 8 • 2:30 to 4:00 PM
NORTH LAUREL 50+ CENTER
9411 Whiskey Bottom Road, Laurel 20723

Topics Covered:

- Current Overview of Grief
- Modern Grief Research and Theory
- Important Grief Concepts
- History of Grief Research and Theory
- Tools to Support Grieving Older Adults

Registration: — Live Materials and Dinner Plates. Students of Whittier High School. \$15 per person. CEUs are provided for Maryland social workers and counselors (LPC).

REGISTRATION INCLUDES: — MONDAY, MARCH 8 — REQUIRED FOR ALL ATTENDEES

REGISTER AT: www.hocogriefseminar.eventbrite.com

Howard County Office on Aging and Independence
KAREN HULL
k.hull@howardcountymd.gov
410-313-7460 (VOICE/TEXT)

Howard County LHIC
www.howardcountymd.gov/aging

- Collaboration with OAI
- Provider focused
- CE offered
- Behavioral Health Work Group Linkage

Promote. Preserve. Protect. www.hclhic.org @hclhic

SAVE THE DATE - HCLHIC SPECIAL SEMINAR
EXERCISE & AGING: EVIDENCE-BASED APPROACHES

- **Date:** March 28, 2019
- **Time:** 2:30-4:00pm
- **Location:** Howard County Health Department
8930 Stanford Blvd., Columbia, MD 20145
Barton A&B

Session I: Exercise and Brain Health J. Carson Smith, PhD Associate Professor, Kinesiology UMD School of Public Health	Session II: Exercise and Muscle Strength Dr. Paul Abosh Morrison Chiropractic, P.A.
--	--

Promote. Preserve. Protect. www.hclhic.org @hclhic

NEXT STEPS AND MEETING WRAP-UP

April Full LHIC Potomac/Severn
Thursday, January 25
8:30 a.m. – 10:30 a.m

Healthy Aging Work Group Meeting
Tuesday, May 28
2:30 p.m. – 4:00 p.m.
Barton A & B

Promote. Preserve. Protect. www.hclhic.org @hclhic
